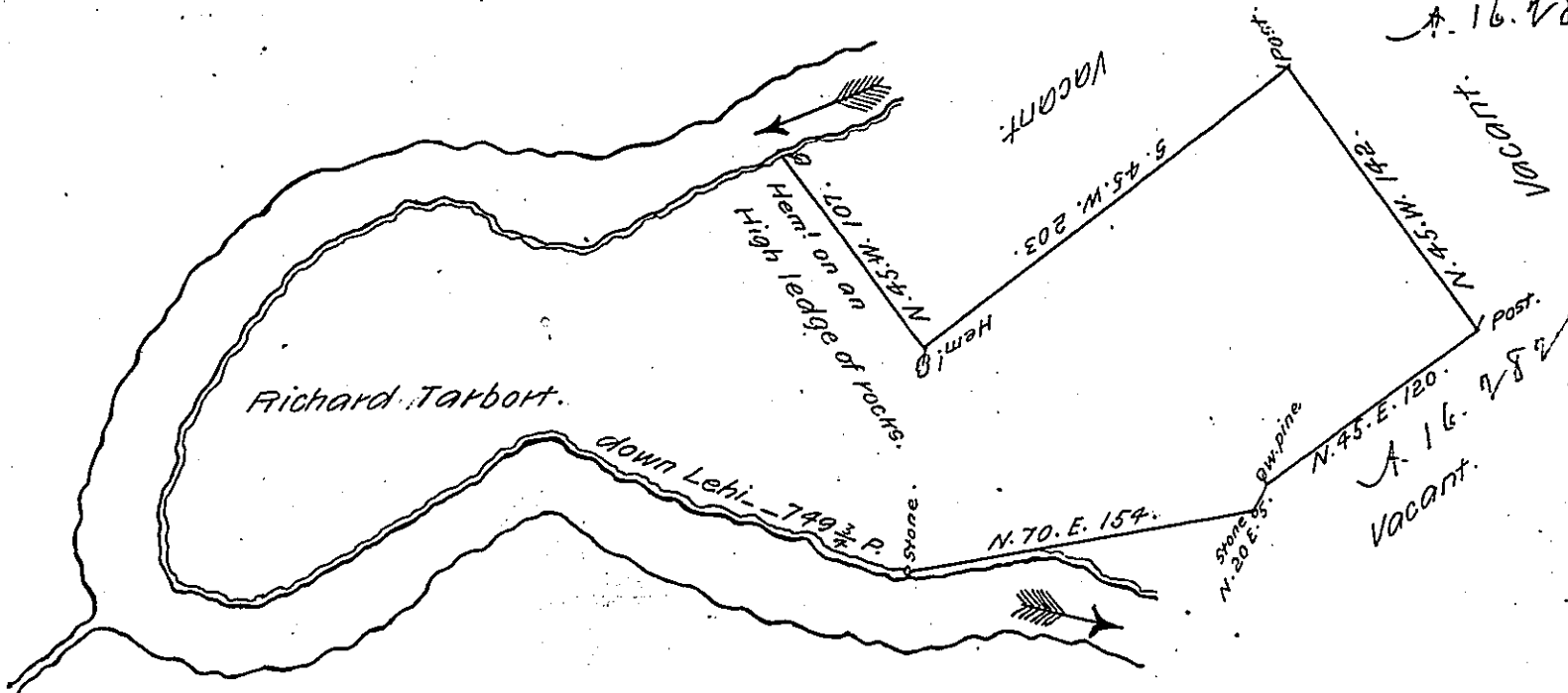


Penn Forest
CARBON ✓



Bearing and distance down Lehi —
Beginning at an Hem! on an high ledge of Rocks.

- 1. S. 58. W. 98. 1/2
- 2. S. 67. W. 11.
- 3. N. 72. W. 30.
- 4. N. 64. W. 18.
- 5. S. 72. W. 14.
- 6. S. 53. W. 48.
- 7. S. 30. W. 18.
- 8. S. 32. W. 44.
- 9. S. 24. W. 34.
- 10. S. 3. W. 18.
- 11. S. 2. E. 30.
- 12. S. 17. E. 12.
- 13. S. 67. E. 27.
- 14. S. 73. E. 12.
- 15. N. 71. E. 32.
- 16. N. 47. E. 44.
- 17. N. 40. E. 36.
- 18. N. 60. E. 13.
- 19. N. 87. E. 28.
- 20. S. 74. E. 31.
- 21. S. 78. E. 26.
- 22. S. 69. E. 36.
- 23. S. 75. E. 32.
- 24. East. 34 3/4 to the line.

By Virtue of a Warrant 19th November 1785 Surveyed the 12th May 1794.
to Richard Tarbort the above described tract of Land situate on
Lehi — opposed the Mouth of Laurel Creek in the Great Pine Swamp
and about five Miles below the Mouth of Mud Run in the County of
Northampton Containing four hundred and thirteen Acres Ninety four
perches & the Allowance of Six P. Cent. &c.

P. Geo. Palmer. D. S.

To Daniel Brodhead Esquire
Surveyor General.

Part of this land is Claimed by Peter Strohl & Jacob Kester by Warrant
of the 17 July 1793. & part Claimed by John Anthony Jun^r. by Warrant of the
30 July 1793. & they have had lines run but Tarborts Warrant could not be
laid agreeable to the Location without taken them.

Geo. Palmer.

IN TESTIMONY that the above is a copy of the original remaining on file in
the Department of Internal Affairs of Pennsylvania, made
conformably to an Act of Assembly approved the 16th day of
February 1833, I have hereunto set my hand and caused
the Seal of said Department to be affixed at Harrisburg,
this twenty seventh day of February 1907.

Isaac D. Brown
Secretary of Internal Affairs.